

# CATTLE SERVICES

## (AYR) LTD



*Summer*  
2018



## *Why use sires from Cattle Services?*

- **WE HAVE THE LARGEST SELECTION OF AYRSHIRE AND AYRSHIRE BLENDED BULLS IN THE UK**
- **CATTLE SERVICES SOURCE UK BULLS FROM THE TOP UK FAMILIES**
- **WE HAVE PAYMENT PLANS TO SUIT YOU, EITHER OVER 3 MONTHS OR 6 MONTHS**
- **DELIVERY TO YOUR TANK OR AI CENTRE IS FREE**
- **SEMEN OFFERS RUN THROUGHOUT THE YEAR**
- **THE SIRES ARE TRIED AND TESTED ON UK FARMS**

## *What is currently available from Cattle Services?*

- **3 PROVEN SIRES OVER £330 PLI**
- **4 PROVEN SIRES THAT ARE OVER 2 FOR TYPE MERIT**
- **PROVEN SIRES OVER 6.5 FOR FERTILITY INDEX**



All figures supplied by AHDB Dairy. Cattle Services Ayr Ltd abide by the AHDB and Holstein UK established code of advertising.

Photography by Jane Steel, Lucinda Morgan, Jessica Miller, Bradley Cullen & Simon Tognola



**EXPORT  
READY**

*Brieryside*  
**MAGIC** A2/A2

  
**SEXED ULTRA  
4M**

HB No - 03000006182237 DOB - 24/04/16 100% AYRSHIRE

KAMOURASKA ROCKSTAR X EX REALITY X EX93 BLACKTHORN X EX94 SIR ADAM  
X EX LORD ONTARIO X EX J. R

**DAM - ROSEHILL REAL BLACK MAGENTA EX90**  
**4 LACTATION AVERAGE 8,966KG, 3.8% F, 3.2% P**



**FUTURE SIRE**

<b>ETA Young Sire: Ayr.Base : 08/18</b>	
Type Merit	0.96
PLI	375
PLI Rel%	37
Milk KG	518
Prod.Rel %	37
Fat KG	22.4
Fat %	0.03
Protein KG	20.1
Protein %	0.04

**HUGE PRODUCTION AND COMPONENTS FROM  
THE MARVELLOUS MAGENTA FAMILY**





# Hilltown OBLIQUE



HB No- 03000006181738 DOB - 20/12/10 100% AYRSHIRE  
 JELYCA OBLIQUE X EX94 TRIPLE CROWN X EX PEARL REEF X EX JUROR  
 DAM – HILLTOWN SNOWBALL EX94  
 11 LACTATION AVERAGE 6,691KG, 4.1% F, 3.4% P

DAUGHTER: BUTTERBESLEY OBLIQUE MAY



OBLIQUE IS  
 A BREED  
 LEADING  
 PLI & TYPE  
 SIRE

PTA: PROVEN SIRE: AYR. BASE 08/18: 108dtrs/41 herds      PROD. REL. 93%      PLI REL. 87%      TYPE REL: 87%

MILK KG 250      FAT KG 17.5      PROTEIN KG 7      LIFESPAN 0.5      SOMATIC REL 86%      PLI £349  
 FAT% 0.11%      PROTEIN % -0.02%      FERTILITY INDEX 4.8      CELLCOUNT 4

Trait		-3	-2	-1	0	+1	+2	+3		Value
A Type Merit	Poor						[Yellow bar from 0 to +2.3]		Excellent	2.3
Mammary	Poor					[Yellow bar from 0 to +1.1]		Excellent	1.1	
Legs & feet	Poor					[Yellow bar from 0 to +2.1]		Excellent	2.1	
Stature	136cm			[Blue bar from -1 to 0]					160cm	-0.8
Chest Width	Narrow				[Blue bar from 0 to -0.2]				Wide	0.2
Body Depth	Shallow			[Blue bar from -1 to 0]					Deep	-1.1
Angularity	Coarse			[Blue bar from -1 to 0]					Open Rib	-0.3
Rump Angle	High pins				[Blue bar from 0 to 0.4]				Low pins	0.4
Rump width	Narrow					[Blue bar from 0 to 1]			Wide	1
Rear leg side	Straight					[Blue bar from 0 to 0.3]			Sickled	0.3
Foot angle	Low					[Blue bar from 0 to 0.1]			Steep	0.1
Fore udd att	Loose					[Blue bar from 0 to 1]			Tight	1
Rear udder ht	Very low				[Blue bar from 0 to -0.3]				Very high	-0.3
Udder sup	Broken					[Blue bar from 0 to 1.1]			Strong	1.1
Udder depth	Below hock					[Blue bar from 0 to 0.9]			20cm above	0.9
Front teat pl	Outside					[Blue bar from 0 to 0.7]			Close	0.7
Teat length	Short		[Blue bar from -1.8 to 0]						Long	-1.8
Teat pos side	Close					[Blue bar from 0 to 0.8]			Apart	0.8
Temperament	Poor					[Blue bar from 0 to 0.4]			Good	0.4
Ease of milk	Slow					[Blue bar from 0 to -0.1]			Fast	-0.1





# *Lynner Oblique* **FOCUS**



HB No - 03000006 1823 16 DOB - 08/06/17 100% AYRSHIRE

JELYCA OBLIQUE X EX93 BILLY RUFFIAN X VG89 AUTUMN GOLD X EX91 BLUE RIBAND

**DAM - LYNER FAIRYSTORY 4 EX93**

**7 LACTATION AVERAGE 6,850KG, 4.3% FAT, 3.5% PROTEIN**

**DAM: LYNER FAIRYSTORY 4**



*Lucinda Morgan*

## **FUTURE SIRE**

<b>ETA Young Sire: Ayr.Base : 08/18</b>	
Type Merit	1.26
PLI	232
PLI Rel%	39
Milk KG	197
Prod.Rel %	43
Fat KG	12.3
Fat %	0.07
Protein KG	7.8
Protein %	0.03

**NEWLY RELEASED SIRE FROM  
THE FANTASTIC FAIRYSTORY FAMILY**





# Rosehill MANDERVILLE



HB No - 03000006181948 DOB - 27/07/12 100% AYRSHIRE

ARDMORE CROWN NAPIER x EX93 BLACKTHORN x EX94 SIR ADAM x EX ONTARIO x EX J.R

DAM – ROSEHILL BLACK MAGENTA EX93

6 LACTATION AVERAGE 8,641KG, 4.2% F, 3.2% P

DAUGHTER: KNOWE CANDY FLOSS 49



THE  
HIGHEST  
PLI SIRE  
AVAILABLE

PTA: PROVEN SIRE: AYR. BASE 08/18: 83 dtrs/3 9 herds

PROD. REL. 79%

TYPE REL: 87%

MILK KG 342    FAT KG 25.7    PROTEIN KG 14.4    LIFESPAN 0.1    SOMATIC REL 70%    PLI £458  
 FAT% 0.17%    PROTEIN % 0.04%    FERTILITY INDEX -0.3    CELLCOUNT -14

Trait		-3	-2	-1	0	+1	+2	+3		Value
A Type Merit	Poor								Excellent	0.9
Mammary	Poor								Excellent	0.8
Legs & feet	Poor								Excellent	0.4
Stature	136cm								160cm	-1.9
Chest Width	Narrow								Wide	-1.5
Body Depth	Shallow								Deep	-0.7
Angularity	Coarse								Open Rib	-0.5
Rump Angle	High pins								Low pins	1
Rump width	Narrow								Wide	0.2
Rear leg side	Straight								Sickled	1
Foot angle	Low								Steep	-1.3
Fore udd att	Loose								Tight	-0.3
Rear udder ht	Very low								Very high	0.5
Udder sup	Broken								Strong	4
Udder depth	Below hock								20cm above	0.3
Front teat pl	Outside								Close	1.8
Teat length	Short								Long	-1.4
Teat pos side	Close								Apart	-0.3
Temperament	Poor								Good	-0.4
Ease of milk	Slow								Fast	-1





Rosehill  
**VITALITY** A2/A2



HB No - 03000006 18 1894 DOB - 02/01/12 100% AYRSHIRE

TRI-STAR REALITY X EX96 BLACKTHORN X GP84 NUCLEUS X VG88 COMMANDER

DAM – ROSEHILL BLACK VELOUR EX96

10 LACTATION AVERAGE 8,776KG, 3.9% F, 3.3% P

DAUGHTER: SANDYFORD VITALITY QUEENIE



THE TYPE  
SPECIALIST,  
HIS  
DAUGHTERS  
HAVE  
FANTASTIC  
UDDERS THAT  
PRODUCE  
LARGE  
VOLUMES OF  
MILK

PTA: PROVEN SIRE: AYR. BASE 08/18: 65 dtrs/36 herds PROD. REL. 88% PLI REL. 79% TYPE REL: 80%

MILK KG	382	FAT KG	25.5	PROTEIN KG	12.7	LIFESPAN	0.1	SOMATIC REL	73%	PLI	£267
FAT%	0.14%	PROTEIN %	0%	FERTILITY INDEX		CELLCOUNT	9				

Trait		-3	-2	-1	0	+1	+2	+3		Value
A Type Merit	Poor								Excellent	0.9
Mammary	Poor								Excellent	1
Legs & feet	Poor								Excellent	0.4
Stature	136cm								160cm	0.6
Chest Width	Narrow								Wide	-0.5
Body Depth	Shallow								Deep	-0.2
Angularity	Coarse								Open Rib	0.6
Rump Angle	High pins								Low pins	-0.7
Rump width	Narrow								Wide	0.7
Rear leg side	Straight								Sickled	1.5
Foot angle	Low								Steep	-1
Fore udd att	Loose								Tight	-0.3
Rear udder ht	Very low								Very high	1.6
Udder sup	Broken								Strong	0.8
Udder depth	Below hock								20cm above	0.4
Front teat pl	Outside								Close	0.5
Teat length	Short								Long	-1.1
Teat pos side	Close								Apart	2.7
Temperament	Poor								Good	-2.1
Ease of milk	Slow								Fast	-0.7



**EXPORT  
READY**

*Swaites*  
**DERMOTT**

**SEXED ULTRA  
4M**

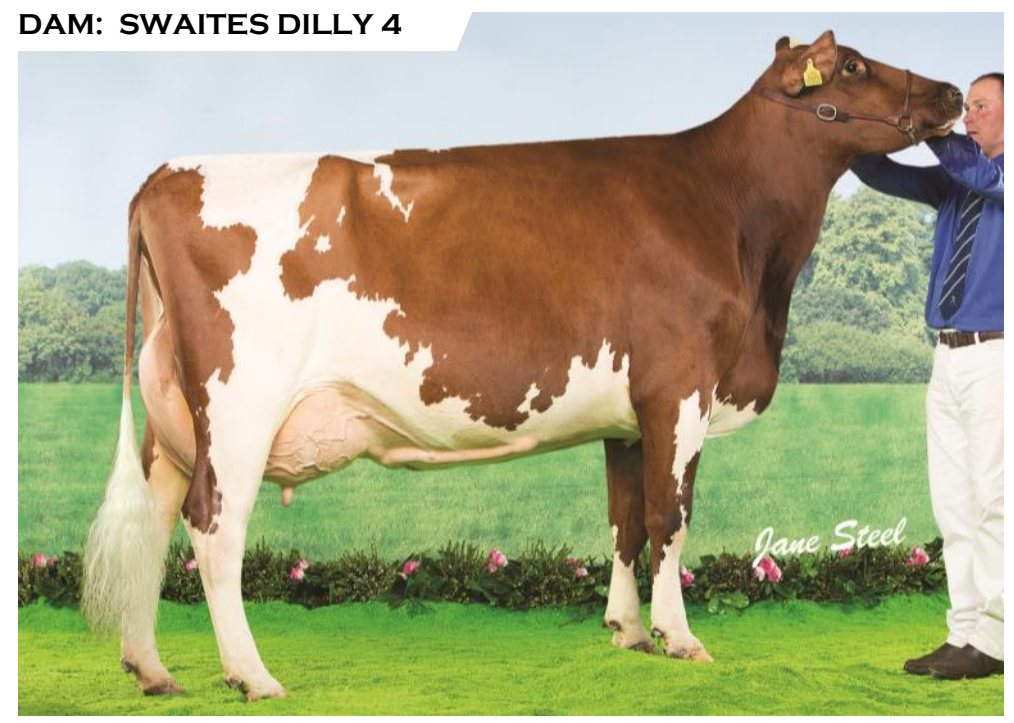
AVAILABLE IN

HB No - 03000007191471 DOB - 24/09/17 89.0625% AYRSHIRE <sup>NOVEMBER</sup>

WEST MOSSGIEL MODERN REALITY x EX91 POTTER x VG88 MAGNUS x EX94 CELEBRATION

**DAM - SWAITES DILLY 4 EX91**

**3 LACTATION AVERAGE 8,650KG, 4.5% FAT, 3.2% PROTEIN**



**FUTURE SIRE**

<b>ETA Young Sire: Ayr.Base : 08/18</b>	
Type Merit	0.88
PLI	237
PLI Rel%	34
Milk KG	320
Prod.Rel %	40
Fat KG	14.2
Fat %	0.02
Protein KG	6.6
Protein %	-0.07

**NEWLY RELEASED SIRE WHO WILL HAVE SEXED  
ULTRA STRAWS AVAILABLE THIS WINTER**



AVAILABLE  
UK MAINLAND  
ONLY

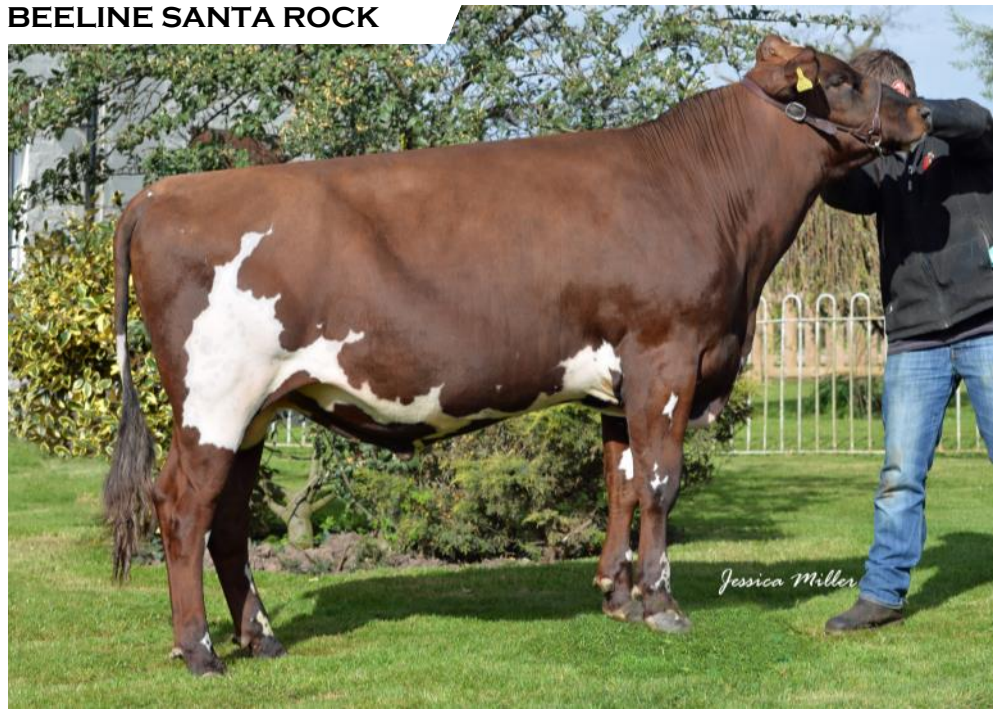
*Beeline*  
**SANTA ROCK**

£379  
PLI

HB No - 03000007191385 DOB - 25/12/15 89.0625% AYRSHIRE  
KAMOURASKA ROCKSTAR X EX92 J OBLIQUE X LORD OF THE RING

DAM - HALMYRE URR LADYBIRD 443 EX92  
4 LACTATION AVERAGE 8,617KG, 4.9% F, 3.7% P

BEELINE SANTA ROCK



## FUTURE SIRE

ETA Young Sire: Ayr.Base : 08/18	
Type Merit	1.26
PLI	379
PLI Rel%	35
Milk KG	376
Prod.Rel %	40
Fat KG	22.7
Fat %	0.11
Protein KG	17
Protein %	0.06

HIS FIRST CALVES BORN HAVE BEEN EXCEPTIONAL



AVAILABLE  
UK MAINLAND  
ONLY

# Changue STADIUM

PROVEN  
SIRE  
2.5 TYPE  
MERIT

HB No - 03000007 190526 DOB - 20/04/2004 37.5% AYRSHIRE

STADEL X EX92 NELSON X VG86 MARTY

DAM – CHANGUE PETULA 38 EX92

5 LACTATION AVERAGE 4,869KG, 4.2% F, 3.1% P

DAUGHTER: CHANGUE MARTHA 49



THE  
HIGHEST  
TYPE SIRE  
AVAILABLE  
FROM CATTLE  
SERVICES

PTA: PROVEN SIRE: AYR. BASE 08/18: 64 dtrs/19 herds		PROD. REL. 88%		PLI REL. 76%		TYPE REL: 74%	
MILK KG 120	FAT KG 7.1	PROTEIN KG 3.8	LIFESPAN 0.5	SOMATIC REL 74%	PLI £185		
FAT% 0.03%	PROTEIN % 0%	FERTILITY INDEX 0.8	CELLCOUNT -3				

Trait		-3	-2	-1	0	+1	+2	+3		Value	
A Type Merit	Poor	[Bar from 0 to +2.5]								Excellent	2.5
Mammary	Poor	[Bar from 0 to +2.0]								Excellent	1.9
Legs & feet	Poor	[Bar from 0 to +1.7]								Excellent	1.7
Stature	136cm	[Bar from 0 to -0.5]								160cm	0.5
Chest Width	Narrow	[Bar from 0 to -0.2]								Wide	0.2
Body Depth	Shallow	[Bar from -1.2 to 0]								Deep	-1.2
Angularity	Coarse	[Bar from 0 to -0.5]								Open Rib	0.5
Rump Angle	High pins	[Bar from -1.1 to 0]								Low pins	-1.1
Rump width	Narrow	[Bar from 0 to -0.4]								Wide	0.4
Rear leg side	Straight	[Bar from -3.4 to 0]								Sickled	-3.4
Foot angle	Low	[Bar from 0 to +3.9]								Steep	3.9
Fore udd att	Loose	[Bar from 0 to +2.8]								Tight	2.8
Rear udder ht	Very low	[Bar from 0 to +2.2]								Very high	2.2
Udder sup	Broken	[Bar from 0 to -0.4]								Strong	0.4
Udder depth	Below hock	[Bar from 0 to +3.2]								20cm above	3.2
Front teat pl	Outside	[Bar from 0 to +0.8]								Close	0.8
Teat length	Short	[Bar from -0.3 to 0]								Long	-0.3
Teat pos side	Close	[Bar from 0 to +2.4]								Apart	2.4
Temperament	Poor	[Bar from 0 to +2.9]								Good	2.9
Ease of milk	Slow	[Bar from 0 to +1.3]								Fast	1.3



AVAILABLE  
UK MAINLAND  
ONLY

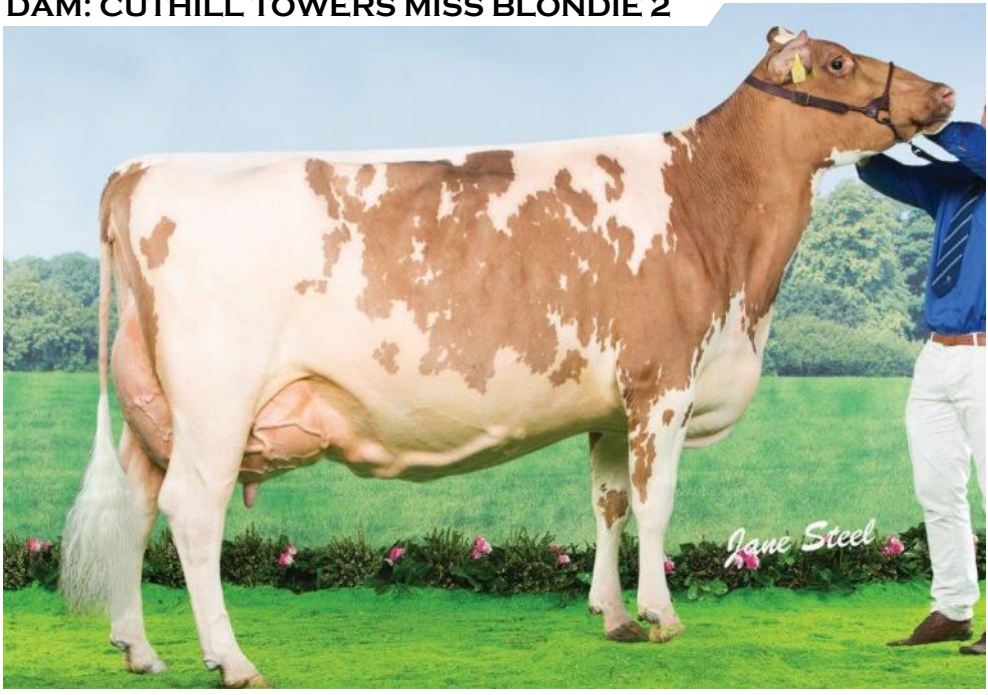
*Cuthill Towers*  
**BUSTER** A2/A2

468KGS  
MILK

HB No - 03000007191416 DOB - 04/09/16 84.375% AYRSHIRE  
HILLTOWN OBLIQUE x EX94 WHITE KNIGHT x VG87 MR TWISTER

DAM - CUTHILL TOWERS MISS BLONDIE 2 EX94 3E  
5 LACTATION AVERAGE 9,495KG, 4.2% F, 3.2% P

DAM: CUTHILL TOWERS MISS BLONDIE 2



## FUTURE SIRE

ETA Young Sire: Ayr.Base : 08/18	
Type Merit	1.86
PLI	331
PLI Rel%	35
Milk KG	468
Prod.Rel %	40
Fat KG	20.2
Fat %	0.02
Protein KG	13.1
Protein %	-0.04

TYPE AND PRODUCTION FROM MISS BLONDIE



**EXPORT  
READY**

*Haresfoot*  
**PANACHE** A2/A2

**PROVEN  
SIRE  
COMPONENT  
LEADING  
SIRE**

HB No - 03000007 190095 DOB - 22/08/2009 87.5% AYRSHIRE

LAGACE RISTOURN X EX94 ENGIMA X EX94 SAND RANGER X EX HELIGO

DAM – HARESFOOT ENIGMA PAMELA EX94

7 LACTATION AVERAGE 9,698KG, 4.9% F, 3.5% P

**DAUGHTER: BEECHMOUNT MARIE GIRL 1 1**



**THE #1 FAT  
BULL IN THE  
BREED**

**PTA: PROVEN SIRE: AYR. BASE 08/18: 134 dtrs/54 herds    PROD. REL. 96%    PLI REL. 90%    TYPE REL: 88%**

**MILK KG 132    FAT KG 24.1    PROTEIN KG 5.5    LIFESPAN 0.1    SOMATIC REL 91%    PLI £264**  
**FAT% 0.26%    PROTEIN % 0.02%    FERTILITY INDEX 4.3    CELLCOUNT -9**

Trait		-3	-2	-1	0	+1	+2	+3	Value
A Type Merit	Poor				■				Excellent -0.2
Mammary	Poor				■				Excellent 0.4
Legs & feet	Poor			■					Excellent -0.6
Stature	136cm				■				160cm 0.5
Chest Width	Narrow				■				Wide 0.3
Body Depth	Shallow				■				Deep 0.3
Angularity	Coarse				■				Open Rib 0.5
Rump Angle	High pins	■							Low pins -1.6
Rump width	Narrow				■				Wide 0.3
Rear leg side	Straight			■					Sickled -1.3
Foot angle	Low					■			Steep 1.6
Fore udd att	Loose					■			Tight 1
Rear udder ht	Very low					■			Very high 0.7
Udder sup	Broken			■					Strong -1.3
Udder depth	Below hock				■				20cm above 0.4
Front teat pl	Outside				■				Close 0.2
Teat length	Short					■			Long 1
Teat pos side	Close			■					Apart -1.5
Temperament	Poor					■			Good 1.1
Ease of milk	Slow			■					Fast -0.9



**EXPORT  
READY**

# Hunnington **FAMOUS** A2/A2

**BREEDING  
SHOW TYPE  
HEIFERS**

HB No - 03000006182152 DOB - 17/05/15 100% AYRSHIRE

DE LA PLAINE PRIME X EX96 EASLAD X EX HARVEST GOLD X VG HAPPY SPIRIT

DAM - HUNNINGTON FRAGY 12 EX96

7 LACTATION AVERAGE 8,152KG, 3.8% F, 3.3% P

DAUGHTER: BOLDVIEW FAM FATALLE



## FUTURE SIRE

**ETA Young Sire: Ayr.Base : 08/18**

Type Merit 1.39

PLI £86

PLI Rel% 37

Milk KG 43

Prod.Rel % 41

Fat KG 1.4

Fat % -0.01

Protein KG 1.8

Protein % 0.01

**BRED FROM THE WORLD FAMOUS  
FRAGY FAMILY AT HUNNINGTON**



AVAILABLE  
UK MAINLAND  
ONLY

# Hunnington MANDELLA

PROVEN  
SIRE  
OUTCROSS  
SIRE

HB No - 03000007190486 DOB - 22/1/2004 87.5% AYRSHIRE

MCCORNICK NELSON x EX95 SUPER STAR x EX BLAZE RED x ASTRONOMER  
DAM – PYLON EASLED EX95

11 LACTATION AVERAGE 8,580KG, 4.3% FAT, 3.4% PROTEIN

DAUGHTER: CUTHILL TOWERS RADAR RAY 13



A  
FAVOURITE  
SIRE FOR  
BREEDERS  
ACROSS THE  
WORLD

PTA: PROVEN SIRE: AYR. BASE 08/18: 256dtrs/110 herds      PROD. REL. 98%      PLI REL. 92%      TYPE REL: 90%

MILK KG 211      FAT KG 24.1      PROTEIN KG 1.8      LIFESPAN 0      SOMATIC REL 93%      PLI £72  
FAT% -0.04%      PROTEIN % -0.08%      FERTILITY INDEX -4.1      CELLCOUNT -8

Trait		-3	-2	-1	0	+1	+2	+3		Value
A Type Merit	Poor								Excellent	0.7
Mammary	Poor								Excellent	0.2
Legs & feet	Poor								Excellent	1
Stature	136cm								160cm	-0.4
Chest Width	Narrow								Wide	-1.6
Body Depth	Shallow								Deep	-0.4
Angularity	Coarse								Open Rib	0.6
Rump Angle	High pins								Low pins	-0.6
Rump width	Narrow								Wide	-0.5
Rear leg side	Straight								Sickled	-0.1
Foot angle	Low								Steep	0.1
Fore udd att	Loose								Tight	0.8
Rear udder ht	Very low								Very high	0
Udder sup	Broken								Strong	-0.2
Udder depth	Below hock								20cm above	0.1
Front teat pl	Outside								Close	0.3
Teat length	Short								Long	-0.5
Teat pos side	Close								Apart	0.6
Temperament	Poor								Good	0.1
Ease of milk	Slow								Fast	0.7



**EXPORT  
READY**

# *Ravenhill* **VICTORY**

**477KG  
MILK**

HB No - 03000006182211 DOB - 21/09/15 100% AYRSHIRE  
ROSEHILL VITALITY x VG88 FIRST LORD x EX94 MILK MACHINE

**DAM - RAVENHILL ETHEL 350 VG88**

**8 LACTATION AVERAGE 10,084KG, 3.8% F, 3.2% P**

**DAM: RAVENHILL ETHEL 350**



## **FUTURE SIRE**

<b>ETA Young Sire: Ayr.Base : 08/18</b>	
Type Merit	0.71
PLI	329
PLI Rel%	35
Milk KG	477
Prod.Rel %	40
Fat KG	21.6
Fat %	0.03
Protein KG	14
Protein %	-0.03

**HUGE PRODUCTION AND FAT FROM THE  
GREAT ETHEL FAMILY**



**EXPORT  
READY**

*Rosehill*  
**REAL McCOY**

**PROVEN  
SIRE  
731KG  
MILK**

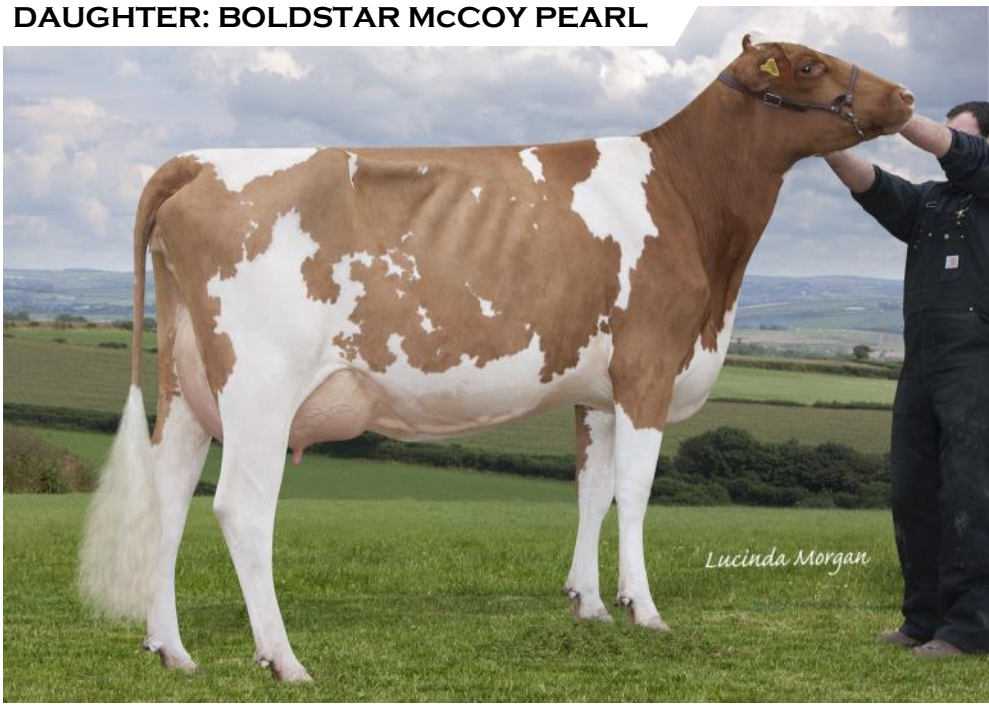
HB No- 03000006 181762 DOB - 13/02/2011 100 % AYRSHIRE

TRI-STAR REALITY X EX93 BLACKTHORN X EX94 SIR ADAM X EX LORD ONTARIO

DAM – ROSEHILL BLACK MAGENTA EX93

6 LACTATION AVERAGE 8,641 KG, 4.2% F, 3.2% P

DAUGHTER: BOLDSTAR McCOY PEARL



**A  
PRODUCTION  
LEADING  
SIRE**

PTA: PROVEN SIRE: AYR. BASE 08/18: 136dtrs/49 herds      PROD. REL. 92%      TYPE REL: 87%

MILK KG 731	FAT KG 23.9	PROTEIN KG 19.4	LIFESPAN -0.2	SOMATIC REL 87%	PLI £204
FAT% -0.09%	PROTEIN % -0.07%	FERTILITY INDEX -2.3	CELLCOUNT 2		

Trait		-3	-2	-1	0	+1	+2	+3		Value
A Type Merit	Poor				■				Excellent	-0.2
Mammary	Poor				■	■			Excellent	0.4
Legs & feet	Poor				■				Excellent	-0.6
Stature	136cm					■	■		160cm	1
Chest Width	Narrow				■				Wide	0.1
Body Depth	Shallow					■	■		Deep	0.4
Angularity	Coarse					■	■		Open Rib	0.7
Rump Angle	High pins					■	■		Low pins	0.6
Rump width	Narrow						■	■	Wide	2
Rear leg side	Straight					■	■		Sickled	0.8
Foot angle	Low					■	■		Steep	0.6
Fore udd att	Loose			■	■				Tight	-1.3
Rear udder ht	Very low				■				Very high	0.1
Udder sup	Broken						■	■	Strong	2.6
Udder depth	Below hock				■				20cm above	-0.4
Front teat pl	Outside					■			Close	0.3
Teat length	Short					■	■		Long	1.1
Teat pos side	Close						■	■	Apart	0.9
Temperament	Poor		■	■	■				Good	-2.5
Ease of milk	Slow				■				Fast	-0.4



**EXPORT  
READY**

# *Sandyford* **TRICLO**

**548KG  
MILK**

HB No - 03000007191257 DOB - 19/02/14 75% AYRSHIRE

TRI-STAR REALITY X EX97 CHATTER X VG EAGAN

DAM - SANDYFORD CLOVER 10 EX97

10 LACTATION AVERAGE 11,378KG, 4.3% F, 3.4% P

DAUGHTER: ARRAN TRICLO HETTY



## **FUTURE SIRE**

<b>ETA Young Sire: Ayr.Base : 08/18</b>	
Type Merit	1.01
PLI	213
PLI Rel%	38
Milk KG	548
Prod.Rel %	41
Fat KG	16
Fat %	-0.08
Protein KG	13.5
Protein %	-0.06

**THE STAMP OF CLOVER**



UK  
MAINLAND  
ONLY

# Stamford HIGH DEFINITION

PROVEN  
SIRE  
8.6 FERTILITY  
INDEX

HB No - 03000006181794 DOB - 01/05/2011 100% AYRSHIRE

CELANDINE FIRST LORD X EX FIRST COMMAND X EX94 BONNIE BRAE HELIGO X VG86 GLADSTONE

DAM — STAMFORD FREDA 15 EX90

11 LACTATION AVERAGE 7,212KG, 5.2% FAT, 3.5% PROTEIN

DAUGHTER: BIGGINVALE MARK MARIE 12



OUTCROSS  
SIRE WHO  
EXCELS IN  
MANAGEMENT  
TRAITS

PTA: PROVEN SIRE: AYR. BASE 08/18: 50dtrs/19 herds PROD. REL. 83% PLI REL. 74% TYPE REL: 73%

MILK KG -5	FAT KG 5	PROTEIN KG 1.3	LIFESPAN 0.2	SOMATIC REL 64%	PLI £336
FAT% 0.08%	PROTEIN % 0.02%	FERTILITY INDEX 8.6	CELLCOUNT -14		

Trait		-3	-2	-1	0	+1	+2	+3		Value
A Type Merit	Poor								Excellent	0
Mammary	Poor								Excellent	-1
Legs & feet	Poor								Excellent	0.2
Stature	136cm								160cm	-2.6
Chest Width	Narrow								Wide	-2.9
Body Depth	Shallow								Deep	-2.7
Angularity	Coarse								Open Rib	-0.8
Rump Angle	High pins								Low pins	2.4
Rump width	Narrow								Wide	-1.8
Rear leg side	Straight								Sickled	0
Foot angle	Low								Steep	0.5
Fore udd att	Loose								Tight	-0.9
Rear udder ht	Very low								Very high	-0.5
Udder sup	Broken								Strong	-1.2
Udder depth	Below hock								20cm above	-0.7
Front teat pl	Outside								Close	0.2
Teat length	Short								Long	0
Teat pos side	Close								Apart	-0.5
Temperament	Poor								Good	2.1
Ease of milk	Slow								Fast	1.3



**EXPORT  
READY**

# Troutbeck SKYFALL

**PROVEN  
SIRE  
1.8 TYPE  
MERIT**

HB No - 03000007191175 DOB - 13/11/2012 87.5 % AYRSHIRE

PALMYRA TRI STAR BURDETTE X EX93 AMADEUS X REDSTAR RED X ACCOLADE

DAM – WEST MOSSGIEL MISS MODERN 5 EX93

7 LACTATION AVERAGE 7183KG 4.7% F, 3.6% P

DAUGHTER: SANDERSON'S SKYFALL JUSTINE



**NEWLY  
PROVEN**

PTA: PROVEN SIRE: AYR. BASE 08/18: 14dtrs/6 herds			PROD. REL. 62%	PLI REL. 52%	TYPE REL: 58%
MILK KG 212	FAT KG 21.6	PROTEIN KG 9.1	LIFESPAN 0.2	SOMATIC REL 42%	PLI £278
FAT% 0.19%	PROTEIN % -0.03%	FERTILITY INDEX	CELLCOUNT -5		

Trait		-3	-2	-1	0	+1	+2	+3		Value
A Type Merit	Poor								Excellent	1.8
Mammary	Poor								Excellent	1.1
Legs & feet	Poor								Excellent	1.7
Stature	136cm								160cm	0.2
Chest Width	Narrow								Wide	-0.4
Body Depth	Shallow								Deep	0
Angularity	Coarse								Open Rib	0.7
Rump Angle	High pins								Low pins	1.4
Rump width	Narrow								Wide	-0.5
Rear leg side	Straight								Sickled	-0.4
Foot angle	Low								Steep	0.5
Fore udd att	Loose								Tight	0.9
Rear udder ht	Very low								Very high	0.5
Udder sup	Broken								Strong	0.3
Udder depth	Below hock								20cm above	1.2
Front teat pl	Outside								Close	0
Teat length	Short								Long	0.2
Teat pos side	Close								Apart	-0.4



**EXPORT  
READY**

# Willhome CHALLENGER

**PROVEN  
SIRE  
2.1 TYPE  
MERIT**

HB No - 03000007190994 DOB - 30/05/2010 87.5 % AYRSHIRE

LAGACE MODEM X EX94 AUTUMN GOLD X VG88 DYNAMIC X FINALIST

**DAM –WILLHOME GOLD CAROLINE EX94**

**5 LACTATION AVERAGE 9,553KG, 3.7% F, 3% P**

**DAUGHTER: WILLHOME CHALLENGER AMANDA**



**ONE OF THE  
HIGHEST  
MAMMARY  
IMPROVEMENT  
SIREs ON THE  
MARKET**

**PTA: PROVEN SIRE: AYR. BASE 08/18: 37dtrs/20 herds PROD. REL. 82% PLI REL. 69% TYPE REL: 65%**

**MILK KG 250 FAT KG 4.5 PROTEIN KG -0.4 LIFESPAN 0.4 SOMATIC REL 64% PLI**  
**FAT% -0.09% PROTEIN % -0.13% FERTILITY INDEX -4.1 CELLCOUNT -12**

Trait		-3	-2	-1	0	+1	+2	+3		Value
A Type Merit	Poor								Excellent	2.1
Mammary	Poor								Excellent	1.8
Legs & feet	Poor								Excellent	1.4
Stature	136cm								160cm	0.6
Chest Width	Narrow								Wide	-0.5
Body Depth	Shallow								Deep	-0.5
Angularity	Coarse								Open Rib	0.4
Rump Angle	High pins								Low pins	1.1
Rump width	Narrow								Wide	-0.2
Rear leg side	Straight								Sickled	-0.7
Foot angle	Low								Steep	0
Fore udd att	Loose								Tight	0.2
Rear udder ht	Very low								Very high	0.8
Udder sup	Broken								Strong	0
Udder depth	Below hock								20cm above	1.7
Front teat pl	Outside								Close	-0.5
Teat length	Short								Long	0.4
Teat pos side	Close								Apart	0.6
Temperament	Poor								Good	1
Ease of milk	Slow								Fast	-0.6



AVAILABLE  
UK MAINLAND  
ONLY

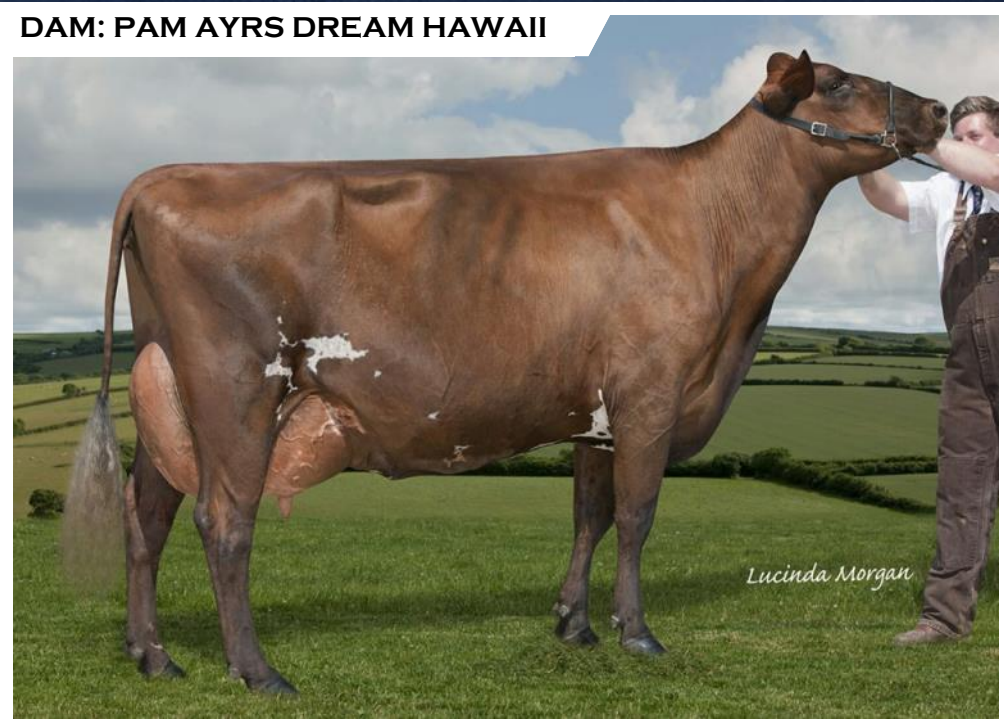
*Willhome*  
**PAMS HORIZON**

0.09%  
PROTEIN

HB No - 03000006182314 DOB - 30/11/15 100% AYRSHIRE  
ROSEHILL BLACKTHORN X EX96 DREAMCATCHER X EX92 NELSON

DAM - PAM AYRS DREAM HAWAII EX96 4E  
7 LACTATION AVERAGE 8,928KG, 4.1% F, 3.5% P

DAM: PAM AYRS DREAM HAWAII



## FUTURE SIRE

ETA Young Sire: Ayr.Base : 08/18	
Type Merit	
PLI	158
PLI Rel%	38
Milk KG	127
Prod.Rel %	43
Fat KG	4.4
Fat %	-0.01
Protein KG	10.6
Protein %	0.09

OUTCROSS SIRE FROM ONE OF  
THE BEST COWS IN THE UK



**EXPORT  
READY**

*West Mossgiel*  
**MODERN REALITY**

**PROVEN  
SIRE  
-23 CELL  
COUNT**

HB No - 03000007191027 DOB - 27/09/2010 87.5 % AYRSHIRE

TRI STAR REALITY X EX93 AMADEUS X REDSTAR RED X ACCOLADE

DAM – WEST MOSSGIEL MISS MODERN 5 EX93

7 LACTATION AVERAGE 7,813KG, 4.7% F, 3.6% P

**DAUGHTER: WILLOWFIELDS WINNIE 2**



**#1 FEET &  
LEGS BULL**

PTA: PROVEN SIRE: AYR. BASE 08/18: 159dtrs/60 herds			PROD. REL. 93%	PLI REL. 84%	TYPE REL: 83%
MILK KG 118	FAT KG 4.3	PROTEIN KG 0.6	LIFESPAN 0.3	SOMATIC REL 85%	PLI £255
FAT% -0.01%	PROTEIN % -0.05%	FERTILITY INDEX 6.7	CELLCOUNT 23		

Trait		-3	-2	-1	0	+1	+2	+3		Value
A Type Merit	Poor								Excellent	1.9
Mammary	Poor								Excellent	1
Legs & feet	Poor								Excellent	2.3
Stature	136cm								160cm	0.4
Chest Width	Narrow								Wide	-1.1
Body Depth	Shallow								Deep	0.4
Angularity	Coarse								Open Rib	1.4
Rump Angle	High pins								Low pins	-0.5
Rump width	Narrow								Wide	-0.7
Rear leg side	Straight								Sickled	-0.1
Foot angle	Low								Steep	1.6
Fore udd att	Loose								Tight	2.1
Rear udder ht	Very low								Very high	0.8
Udder sup	Broken								Strong	0.9
Udder depth	Below hock								20cm above	1.6
Front teat pl	Outside								Close	-1.6
Teat length	Short								Long	0.1
Teat pos side	Close								Apart	0.1
Temperament	Poor								Good	-1.8
Ease of milk	Slow								Fast	-0.2



**EXPORT  
READY**

# Whitecroft NECTAR

**345KG  
MILK**

HB No - 03000006182264 DOB - 13/11/16 93.75% AYRSHIRE

GWYNNOG PRIMETIME X EX92 J OBLIQUE X EX94 FIRST LORD X EX94 TRIPLE PRIME

X EX MURPHY X EX93 TRIDENT

DAM - WHITECROFT NELLIE 49 EX92 2E

4 LACTATION AVERAGE 8,154 KG, 4.7% F, 3.6% P

GDAM: WHITECROFT NELLIE 38



## FUTURE SIRE

ETA Young Sire: Ayr.Base : 08/18	
Type Merit	1.65
PLI	339
PLI Rel%	26
Milk KG	345
Prod.Rel %	26
Fat KG	18
Fat %	0.07
Protein KG	10.9
Protein %	0

**THE ALL IN ONE PACKAGE SIRE:  
PRODUCTION, TYPE & PLI**



Keep up to date via the  
website & Facebook page

Get the latest offers  
sent straight to  
your mobile



Sam Wake  
07803 515626  
Office: 01292 471292  
[sales@cattleservices.org](mailto:sales@cattleservices.org)  
[www.cattleservices.org](http://www.cattleservices.org)